

A Net Zero Supply Chain and Suppliers

NHS Net Zero Targets

2040

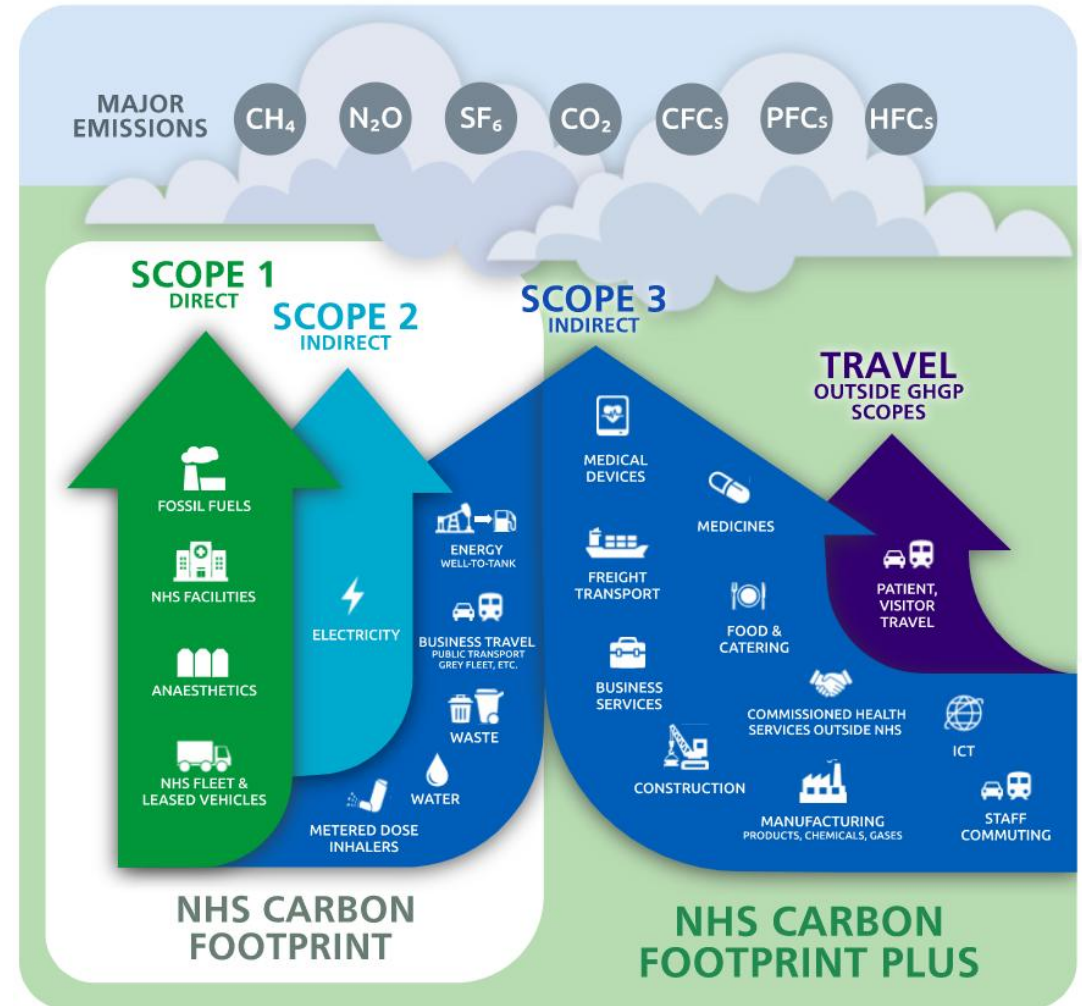
80% reduction in direct carbon emissions controlled by the NHS by 2028-2032 (compared to 1990 baseline)

100% reduction in direct carbon emissions controlled by the NHS by 2040

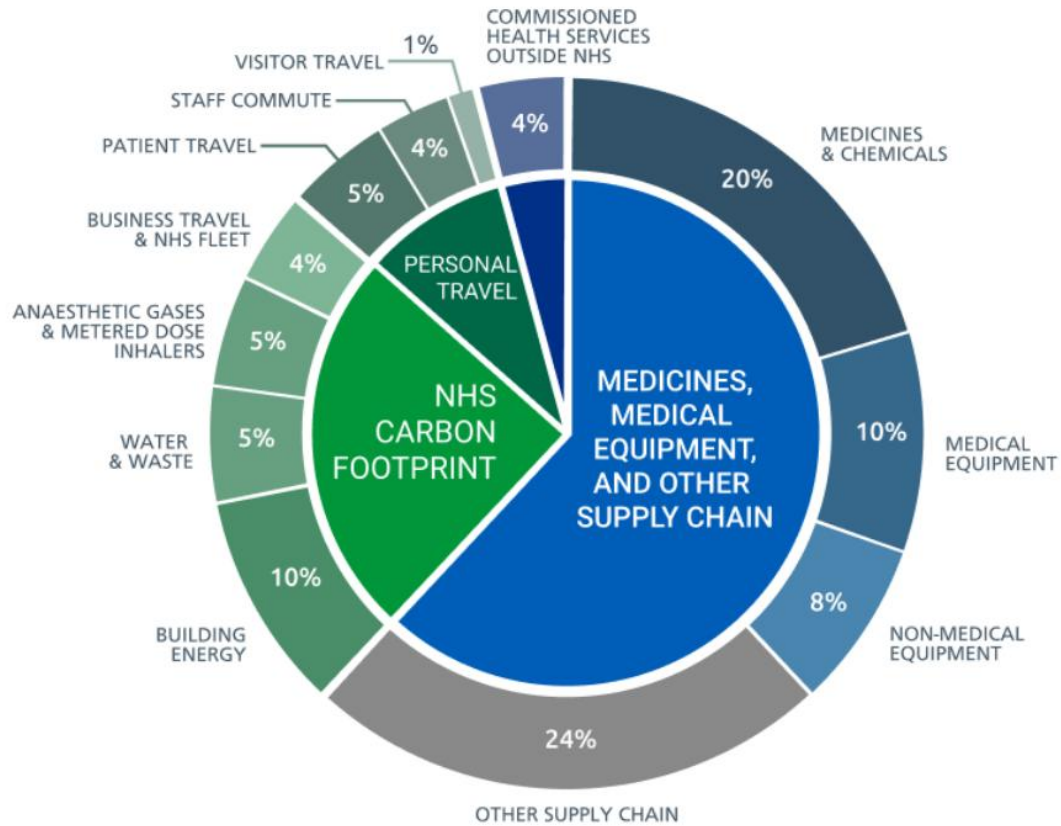
2045

80% reduction in direct carbon emissions influenced by the NHS by 2036-2039 (compared to 1990 baseline)

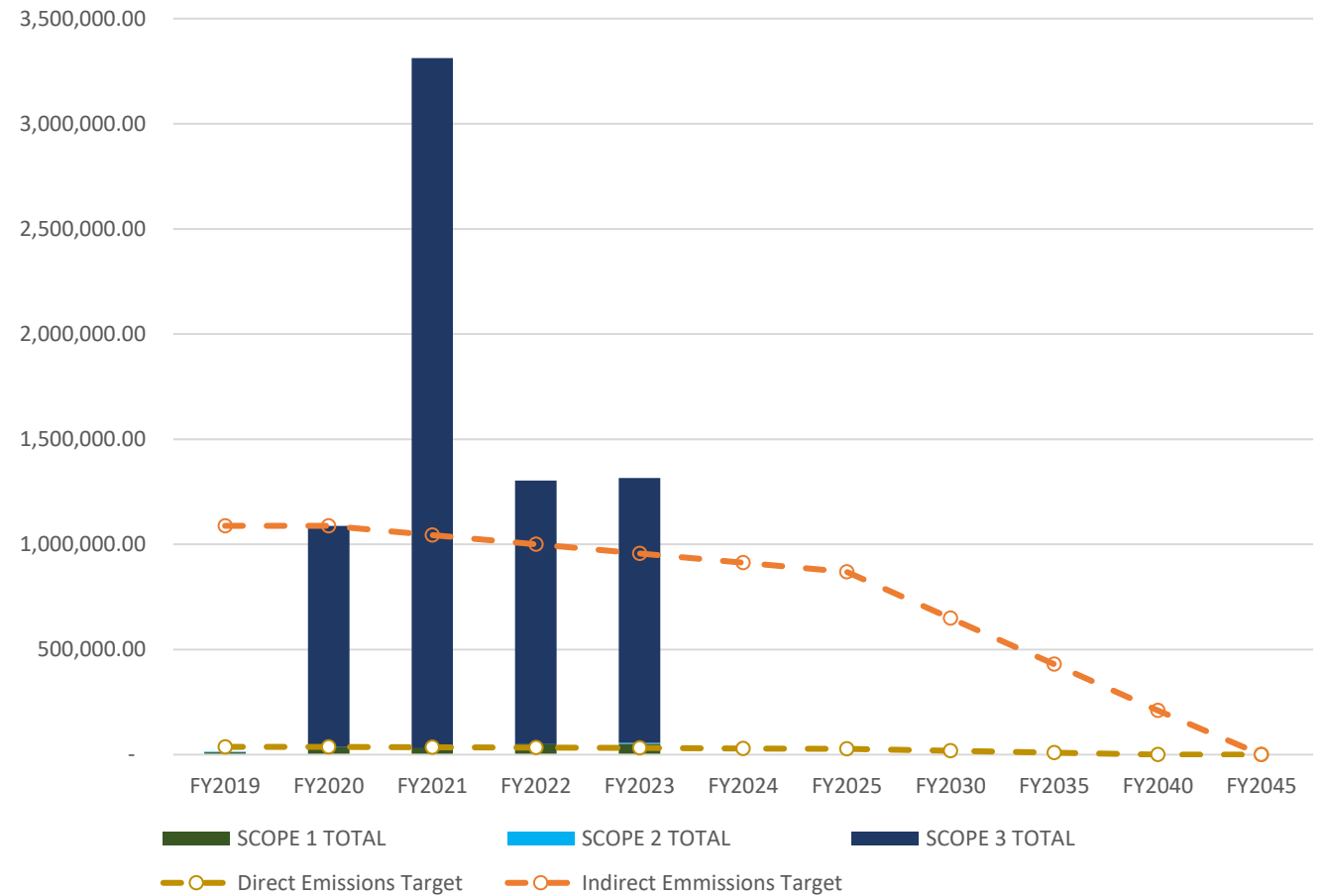
100% reduction in direct carbon emissions controlled by the NHS by 2045



Our Role in the NHS System Targets



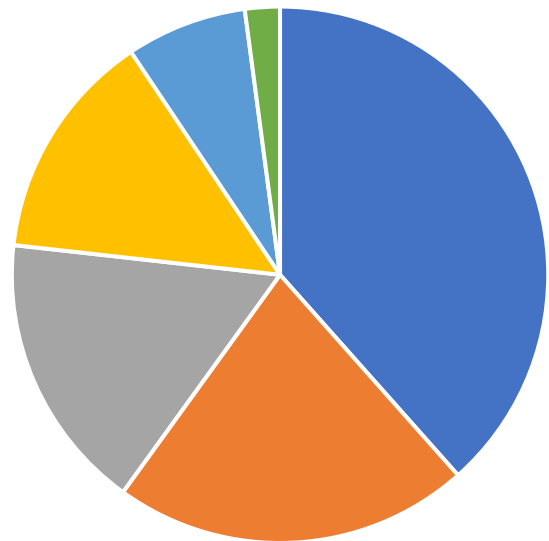
NHS Supply Chain Emmissions Versus Targets



Spotlight on Procurement (Scope 3)

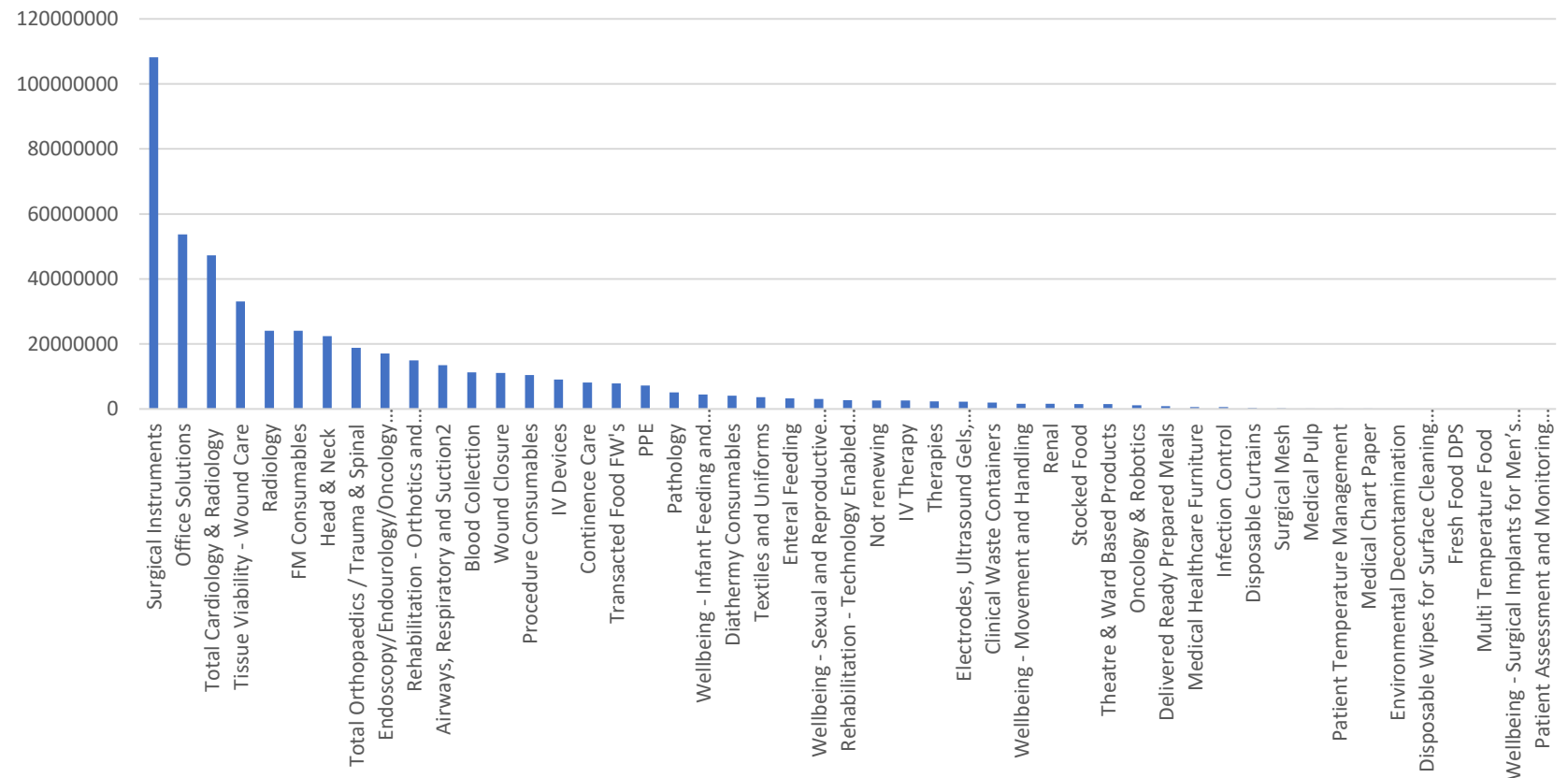
Most of our emissions are Scope 3, from the medical devices and clinical consumables we supply into the NHS. Of these, highest emissions by far are in medical and surgical consumables, medical technology, facilities and office solutions, and rehabilitation and community.

Carbon Emissions Split by Category



- Medical and Surgical Consumables
- Medical Technology
- Facilities including Office Solutions
- Rehabilitation and Community
- Diagnostic Equipment and Services
- Food

Total



Our Plan to Tackle Scope 1 and Scope 2 Emissions

Our three key assets for reducing our Scope 1 and Scope 2 emissions are our offices, our warehouses, and our fleet. Through our Estates Strategy and our Logistics Contract, our strategy is to drive improvements across these three areas:



Estates Strategy

- ✓ Reducing energy consumption by storing and flowing stock through our warehouses in the most efficient way, reducing stockholding requirements and transport / travel
- ✓ Embedding a shift away from gas heating
- ✓ Establishing renewable electricity contracts to ensure we are sourcing from greener sources
- ✓ Exploring options for onsite renewable energy
- ✓ Designing a travel plan that reduces the amount of carbon intensive travel undertaken by colleagues

Logistics Contract

- ✓ Making carbon emission reduction a key requirement and performance metric contained in the Logistics Contract for the outsourced provider to deliver to
- ✓ Within twelve months of the commencement date, there is a contractual obligation for the provider to establish baseline emissions for the logistics service and develop detailed plans as to how the NHS objective (80% reduction in baseline emissions by 2032) will be achieved during the lifetime of the contract.

Our Plan to Tackle Scope 3 Emissions

Our key asset for reducing our Scope 3 emissions are through our commercial activities:

Our Commercial Activities

Carbon reduction enabled through our *Buy Less, Buy Better and Buy Different Approach*

Buy Less

- ✓ Reduce consumption by working with trusts to buy less
- ✓ Work with the customer team to develop a demand comparison tool for IMS managers to support trusts to reduce consumption items (e.g., couch roll, gloves, paper)
- ✓ Deliver further stock holding benefits through the IMS programme

Buy Better

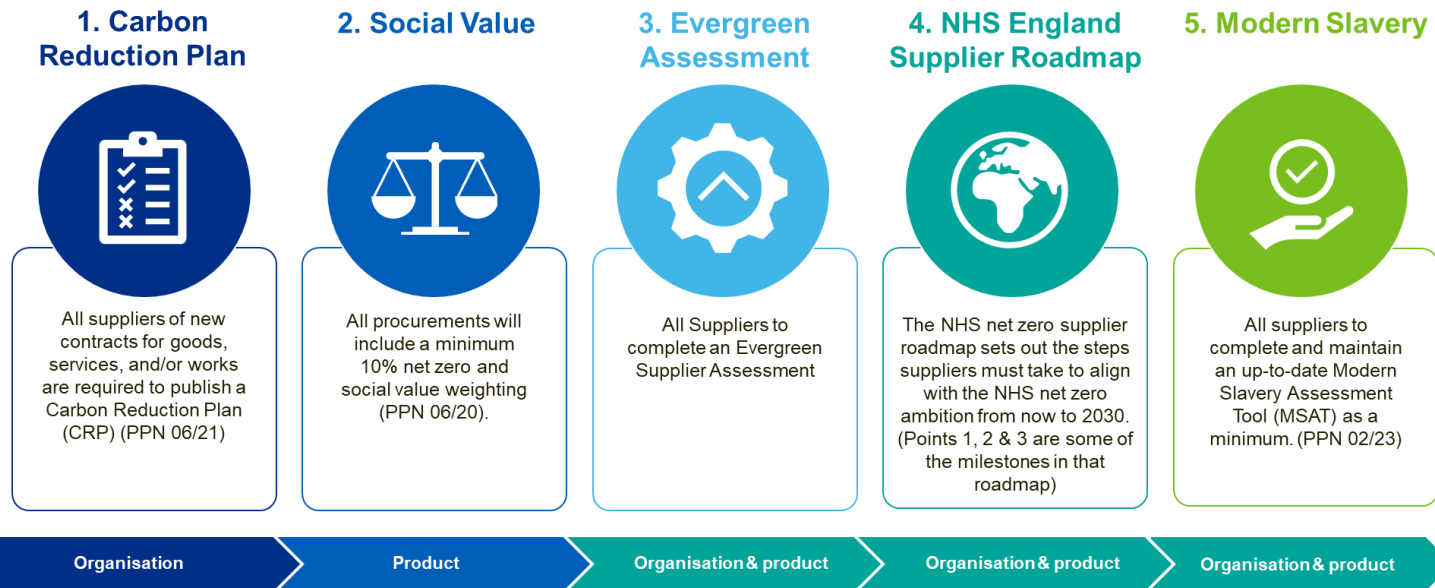
- ✓ Reduce CO2 equivalent emissions of suppliers
- ✓ Work with the commercial directorate to implement the sustainability reporting requirements in Evergreen, putting together a supplier dashboard that demonstrates their commitments, progress and verifications

Buy Different

- ✓ Design and bring to market more sustainable solutions across our medical devices and clinical consumables range
- ✓ Work with the SRM team to incorporate value release programmes, and broader category teams for opportunities of frameworks realised – using case studies
- ✓ Market opportunities available, with clear instructions and options for trusts

Our Sustainability Plan is underpinned by the **Evergreen Sustainable Supplier Assessment**. This is an online tool designed for suppliers to share their sustainability information with the NHS, providing a single route for data sharing and aligning with the NHS Net Zero and sustainability ambitions. It allows NHS Supply Chain to benchmark suppliers against sustainability priorities, ensuring the products and services procured contribute to reaching Net Zero.

In January 2025, we launched the **Five Asks for suppliers on all new frameworks**.



In the first nine months...

Coverage

- 90% of our supplier carbon emissions are now covered by an Evergreen Assessment

External Validation

- 51% of supplier carbon emissions are covered by Science Based Target Initiatives (SBTi)
- 54% of supplier carbon emissions are covered by EcoVadis Sustainability Assessments
- 56% of our supplier carbon emissions are reporting to Carbon Disclosure Project (CDP) standard

Targets

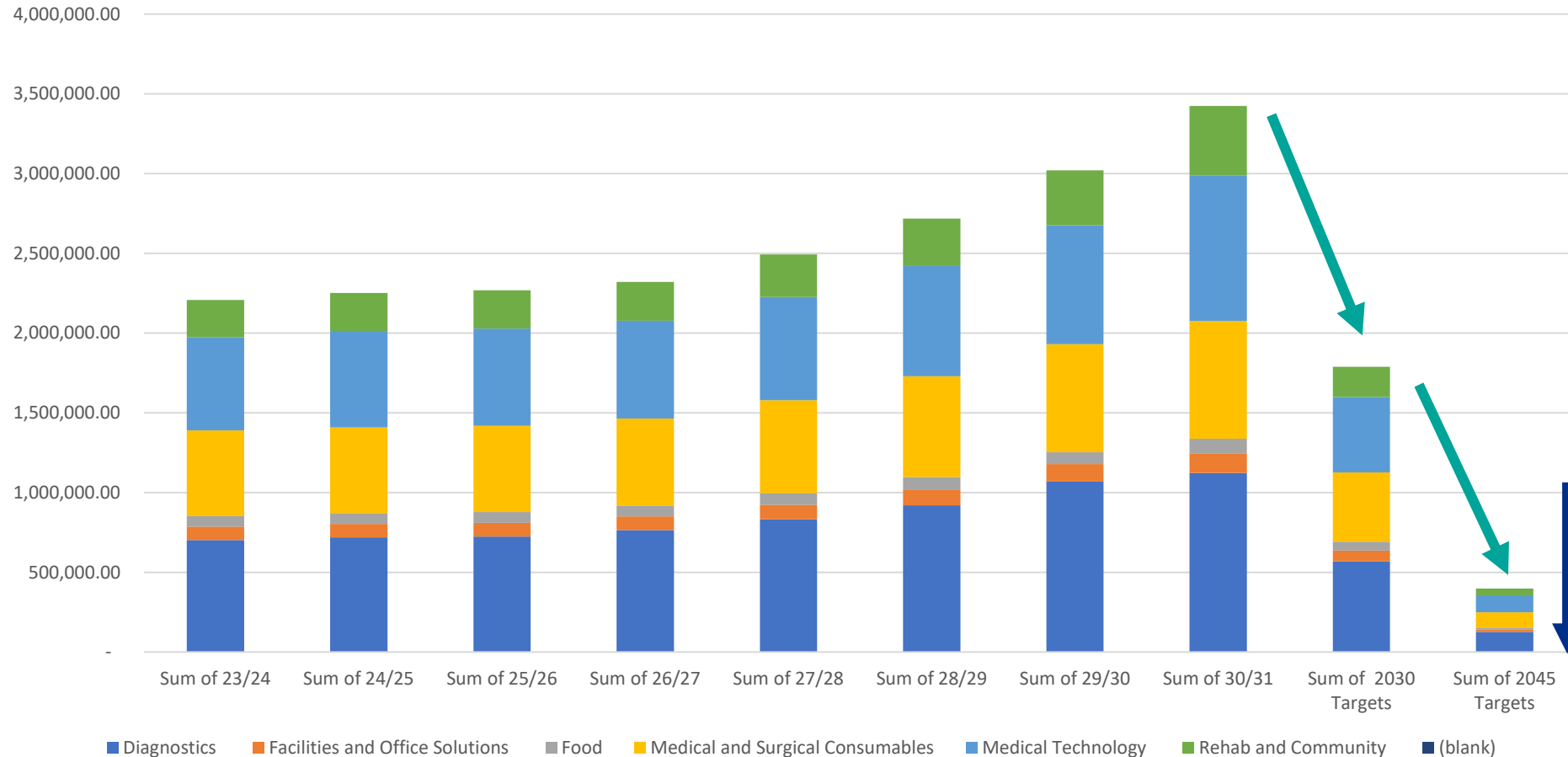
- 42% of our supplier carbon emissions already have targets in line with the NHS and 68% are in line with the UK Government
- 100% of suppliers from 2024 agreements onwards committed to the UK Government Target (via the Carbon Reduction Plan Policy)

Current Trajectory

- With current commitments, emissions are set to reduce from 1.32 million tonnes to 235k tonnes (82% reduction) by 2045

NHS Supply Chain Carbon Reduction Projections

The implementation of the Sustainability Plan will require broad adoption across the organisation and supply chain so it can be delivered at pace.



Buy Better – suppliers decarbonising & achieving their targets

Buy Less and Buy Different will be needed to support suppliers hitting their targets and bridge the gap to NET Zero

dated 14/01/25

from March 31 to April 2, 2025 for the ultimate Fabric, Power BI, SQL, and AI community-led learning event. Use code MSCUST for \$150 off.

Export Share Subscribe Set alert

NHS Supply Chain Trust Volume Comparison

Year-Month: 4,381,571

Multiple selections: Average Volume for Selected Group

Trust Name	Total Volume	Total Volume by Date	Variance to Group Average
University Hospitals Birmingham NHS Foundation Trust	205,484,850		4589.95%
Manchester University NHS Foundation Trust	144,793,707		3250.25%
University Hospitals Sussex NHS Foundation Trust	141,987,529		3140.56%
Barts Health NHS Trust	137,080,301		3026.63%
University Hospitals Bristol and Weston NHS Foundation Trust	130,512,241		2878.64%
North Bristol NHS Trust	120,225,833		2643.90%
Northern Care Alliance NHS Foundation Trust	117,678,913		2585.77%
Nottingham University Hospitals NHS Trust	102,054,986		2229.22%
Leeds Teaching Hospitals NHS Trust	101,840,137		2224.28%
University Hospitals Of Leicester NHS Trust	98,907,515		2157.33%
Mid Yorkshire Hospitals NHS Trust	98,188,215		2148.76%
Sheffield Teaching Hospitals NHS Foundation Trust	94,983,422		2047.79%
Liverpool University Hospitals NHS Foundation Trust	91,699,149		1992.84%
University Hospitals Of North Midlands NHS Trust	85,443,145		1850.26%
Hull University Teaching Hospitals NHS Trust	85,359,191		1845.14%
The Newcastle upon Tyne Hospitals NHS Foundation Trust	85,259,486		1845.87%
Guys and St Thomas NHS Foundation Trust	79,691,598		1718.79%
Kings Interventional Facilities Man LLP	75,779,103		1629.50%
Mid and South Essex NHS Foundation Trust	73,507,664		1597.64%
Gloucester Hospital Subsidiary Ltd	71,042,212		1521.84%
United Lincolnshire Hospitals NHS Trust	70,808,067		1516.04%
Frimley Health NHS Foundation Trust	70,597,586		1511.24%
Imperial College Healthcare NHS Trust	70,313,756		1504.74%
Royal Free London NHS Foundation Trust	69,579,444		1487.98%
East Suffolk and North Essex Foundation Trust	68,477,944		1467.43%
University Hospitals of Derby and Burton NHS Foundation Trust	68,470,731		1462.70%
Cambridge University Hospitals NHS Foundation Trust	65,174,864		1387.48%
Royal Berkshire NHS Foundation Trust	64,942,847		1382.44%

Product Volume Comparison

Reduce Selection to Show Chart

Select Trusts to Compare

Assessment



Reuse

from Single Use to Reusables
Opportunities capture both switching opportunities from single use products to reusables and where extending a product's useful life through re-use can be driving down carbon.

Switching to multi-use products or equipment, this area also touches on the reuse of equipment that has been previously loaned to others such as frames. We have highlighted where there are opportunities within our frameworks with case studies to enable reuse and extend a product's life.

To understand the environmental impacts and benefits of sustainable alternatives alongside procurement costs to fully understand the effects of switching. Trusts need to consider these switches found it involves more than just replacing one product with another. It requires process and behaviour changes, infrastructure changes, and transparent data visibility.

Reusability Opportunities



about this and get

Read Our Case Studies



Reusable Sharps Containers Cuts 15 Tonnes of Plastic
Switching to a reusable product.



Reusable Tourniquet Provides Significant Waste Reduction Opportunities
A simple, sustainable switch.



Waste Reduction by Switching to Reusable Medic Holloware
A sustainable material switch.

Buy Different