

Decarbonising the NHS

4th February 2025

15 Hatfields. London

Dr Tim Ballard

National Clinical Advisor General Practice,
Online and Independent Healthcare
(Primary Medical Services) &
Environmental Sustainability



Adaptation & Mitigation



**Two sides of the
same coin....**

Adaptation - Flooding

Cockermouth 2009



High quality care,
Low environmental impact

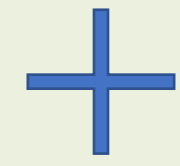
£ Sustainable
value

=

outcomes



patients



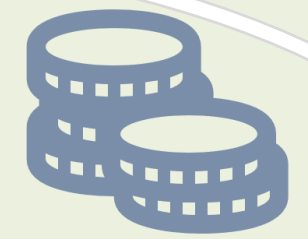
populations



environmental



social



financial

impacts

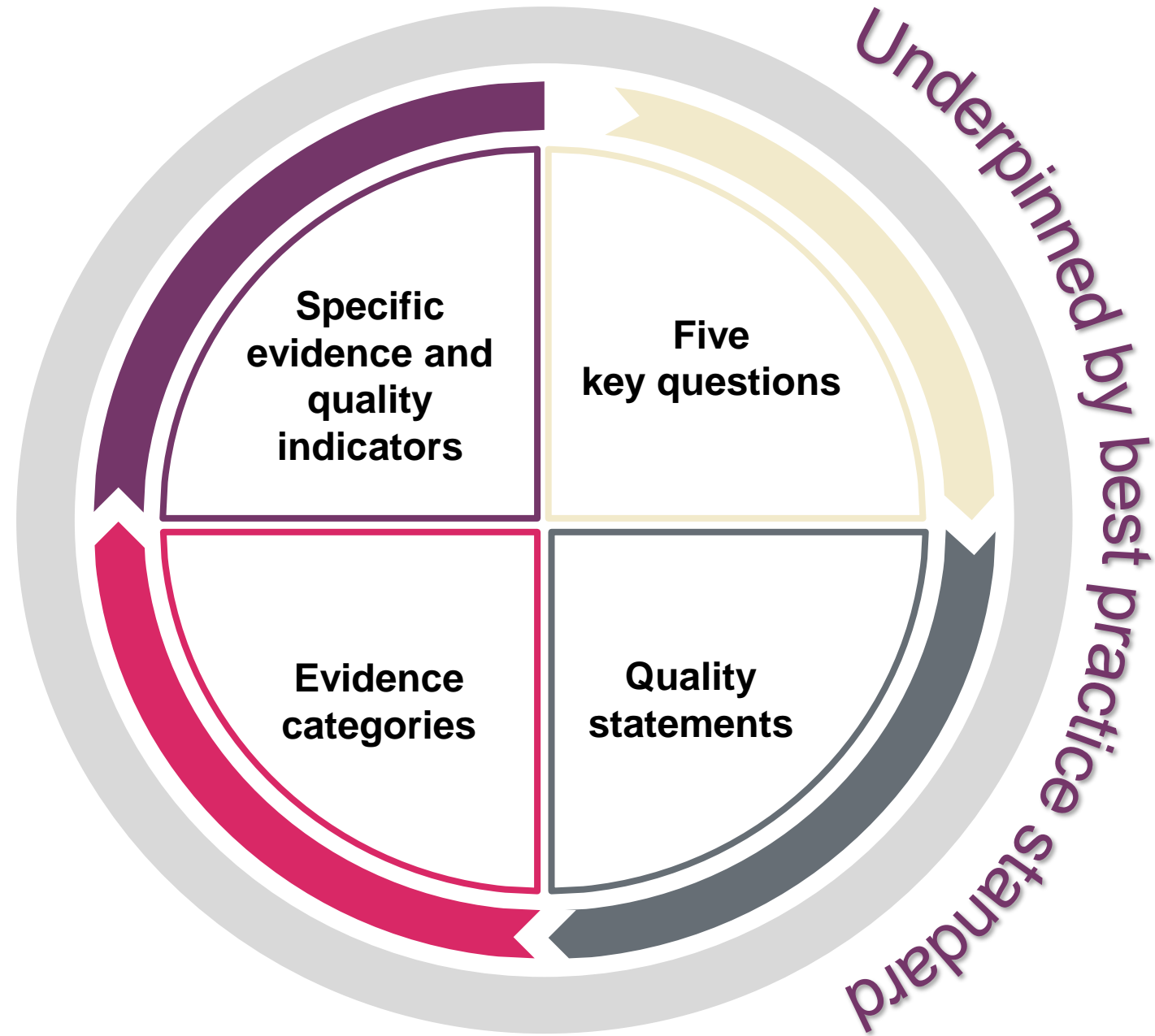
The **TRIPLE BOTTOM LINE**

Mortimer F, Isherwood J, Wilkinson A, Vaux E. (2018)
Sustainability in quality improvement: redefining value.
Future Healthcare Journal. Vol.5(2):88-93

Our single assessment framework

Our framework will assess providers, local authorities and integrated care systems with a consistent set of key themes

- Giving us an up-to-date view of quality
- Helping us better identify trends and patterns across areas



Sustainability in the SAF

Mitigation

Key Question:
Well-Led

Quality Statement:

- Environmental Sustainability

Adaptation

Key Questions:
Safe and Well-Led

Quality Statements:

- Safe environments
- Governance, management and sustainability

Quality Statement (Well-led key question)

Environmental sustainability – sustainable development

We understand any negative impact of our activities on the environment, and we strive to make a positive contribution in reducing it and support people to do the same.



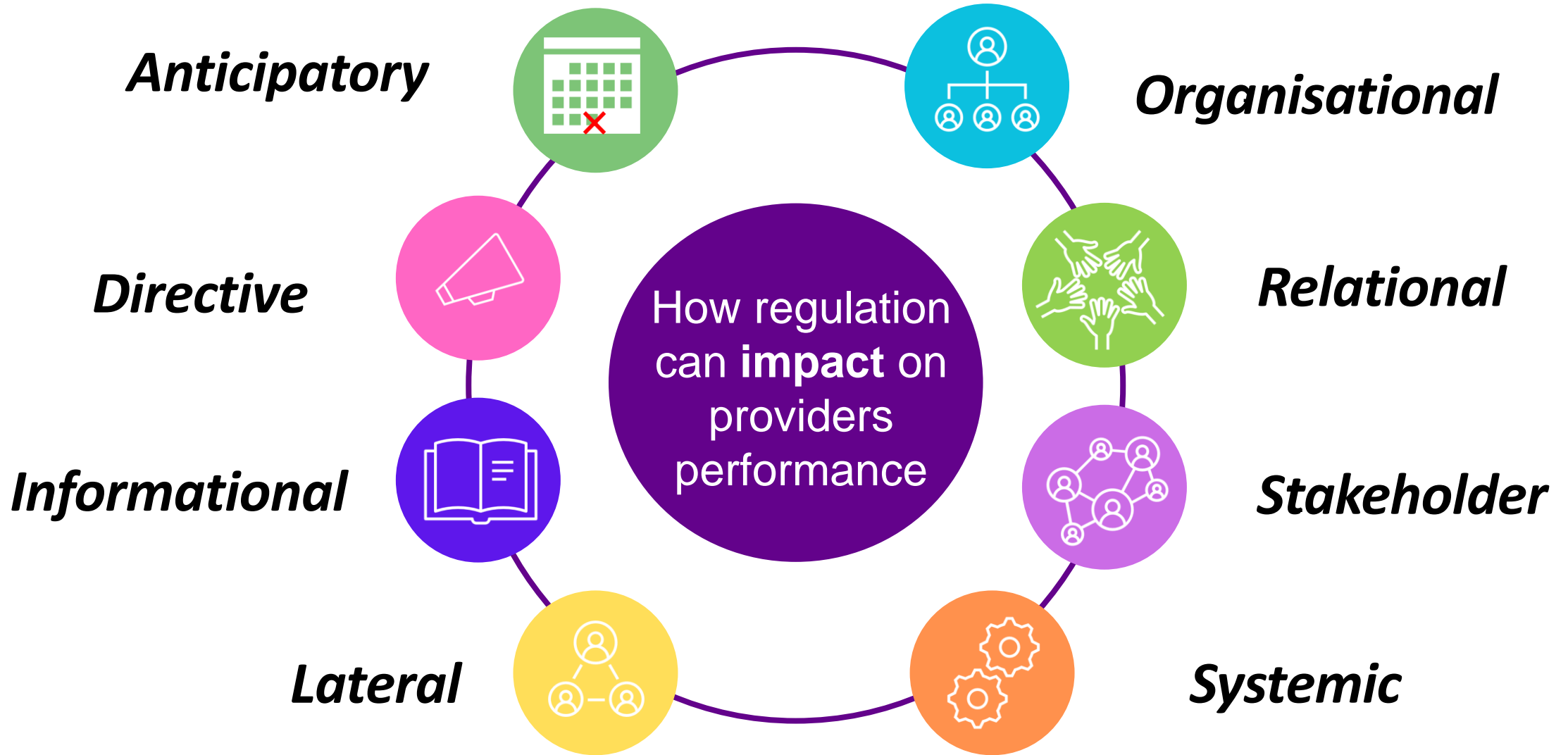
Quality Statement (Well-led key question)

Environmental sustainability – sustainable development

Currently “Live” in Trust Level Well Led Assessments/Inspections and ICB Assessments.

Will be rolled out to other sectors later.





ICSs Understanding the need for Adaptation and driving improvement

Developing a system wide plan that is resilient
in the ability to respond to heat waves and
Floods

During summer 2022, there were an estimated
2,985 all-cause excess deaths associated with
5 heat episodes

ICSs Understanding and responding to variability

Understanding Public Health and environmental impacts across the patch- approaching problems holistically (Birmingham and Solihull).

Hospital Trusts

Green Plan

Board Representation (NEDs?)

Not just Estates, Medical Gases & Waste

GIRFT & OPD Transformation

Staff Engagement

Health Inequalities & Anchor Institutions

General Practice



- Primary care is responsible for approx. **25% of the NHS carbon footprint** and influences the larger NHS footprint through its gatekeeper role
- Prescribing is of central importance
- The Greener Practice Platform

“Show me your meds please?”

£300m is wasted on medicines that are thrown away or stockpiled.



“Better Prescribing”

Implementing the NICE guideline on medicines optimisation (NG5) could save :



202 tonnes of greenhouse gas emissions



0.3 million m³ of fresh water



24 tonnes of waste

per 100,000 population

Total for England
60,000 tons CO₂
7000 tons of
waste

Influencing the wider social determinants of health

“The environmental impact of healthcare is the lowest when it doesn’t need to happen in the first place”

Dr Tim Ballard

National Clinical Advisor
General Practice, Online and
Independent Healthcare
(Primary Medical Services) and
Environmental Sustainability
tim.ballard@cqc.org.uk

www.cqc.org.uk
enquiries@cqc.org.uk

@CQCProf
youtube.com/user/cqcdigitalcomms
facebook.com/CareQualityCommission

